



WAHL CLIPPER CORPORATION
World Headquarters
P.O. Box 578, Sterling, IL 61081

Wahl (UK) Limited
Sterling House, Clipper Close
Ramsgate, Kent CT12 5GG

Wahl Hungária Kft
H-9200 Mosonmagyaróvár
Barátság u.6,
Hungary

Wahl International Consumer Group B.V.
Engelenburgstraat 36
7391 AM Twello,
The Netherlands

Wahl Spain
Fernando Giner de los Ríos 12
46910 Sedavi
Valencia, Spain

Wahl France SAS
1c rue Foch
67450 Mundolsheim
France

WAHL Italia s.r.l.
Via Gobetti 52 - 1° piano
I-40129 Bologna (BO)
Italia

Представительство в РФ и РБ:
ООО УОЛЛ Рус
Ракетный бульвар, д. 16
129164 Москва / Russia (Россия)

Wahl India Grooming Products Pvt Ltd.
B-1002, 10TH Floor, B-Wing, Lotus Corporate Park,
Off Jay Coach Flyover,
Western Express Highway,
Goregaon-East, Mumbai 400-063

Wahl Japan
日本ウォール株式会社
151-0053
東京都渋谷区代々木 1-32-11 8F

Wahl SE Asia Pte. Ltd.
51 Goldhill Plaza
#12-07 / 08/09/10
Singapore 308900

Wahl Australia PTY LTD
PO Box 456
Acacia Ridge QLD 4110,
Australia

Wahl NZ Limited
PO Box 38 323
Wellington Mail Centre
Lower Hutt 5045, New Zealand

Wahl Clipper Colombia SAS
Calle 140 #11-45 Oficina 518
Bogota Colombia 110111

WAHL CLIPPER BRASIL
Rua. Professor Luiz Leite, 150
Bairro Eldorado - São Jose dos Campos - SP
Cep: 12238-576

Wahl Argentina
Av. Alvarez Jonte 5655
Buenos Aires (C1407GPK), Argentina

WAHL MEA FZCO
Dubai Airport Free Zone
P.O Box 371395, Dubai UAE

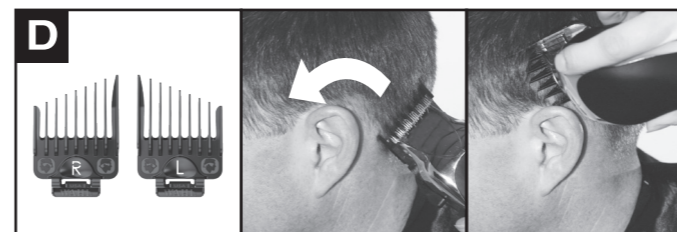
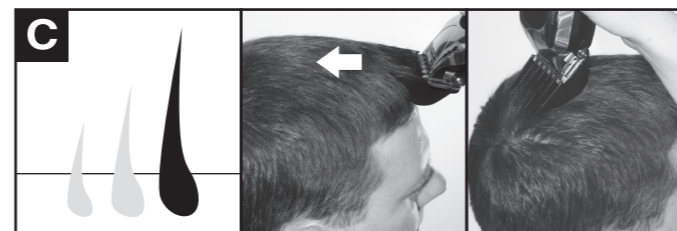
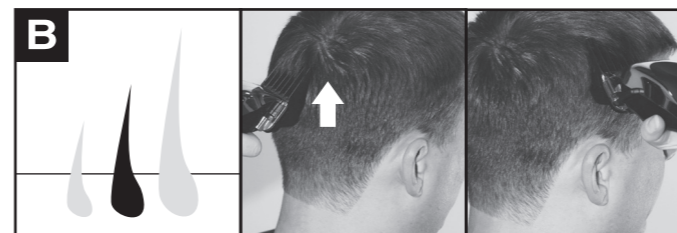
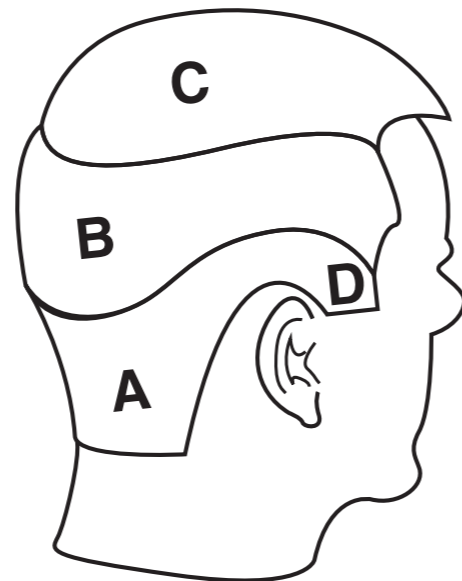
Wahl Clipper (Pty) Ltd
PO Box 2916 Bedfordview,
Gauteng 2007 South Africa



25 mm



1.5 mm



9217
79610
79050
MC
MC2
MC3
20100
9117
SC

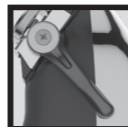
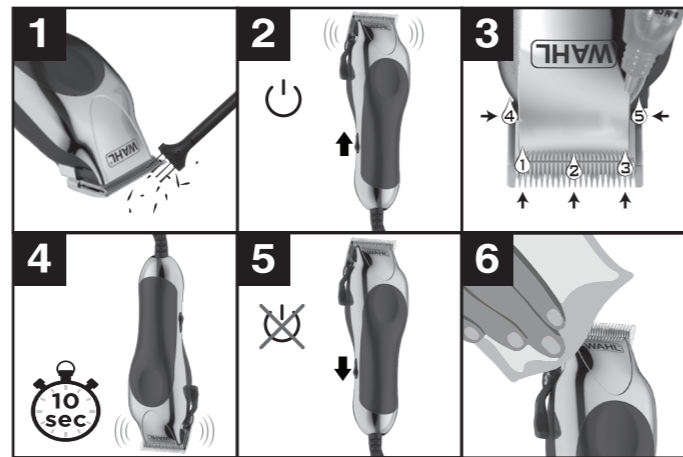
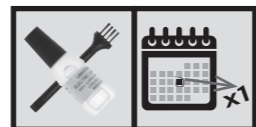
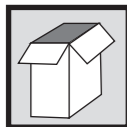
FOR MODELS: 1395

CORDED CLIPPERS PRODUCT GUIDE

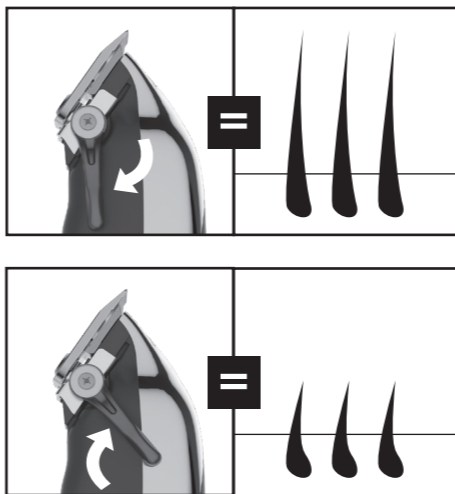
art no: 94473
1395.2121



© 2021
Wahl® is a registered trademark
of Wahl Clipper Corporation
Revision 7/21 V1
www.wahl-consumer.com



MODELS: 9217, 79610, 79050, MC, MC2, MC3, 20100



ACCESSORIES ARE OPTIONAL AND CAN VARY FROM MODEL TO MODEL.

